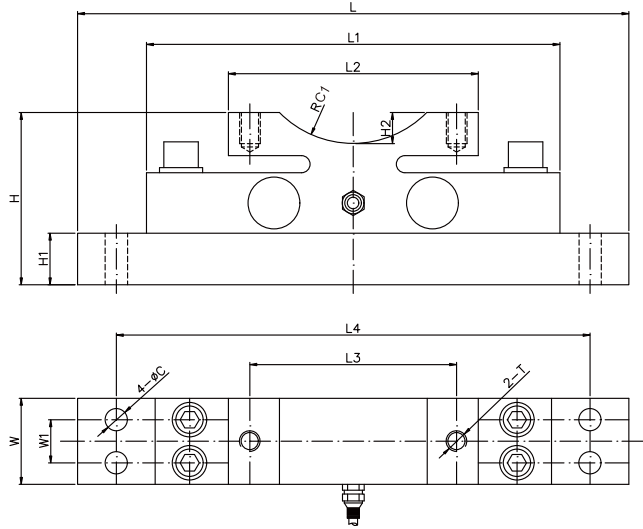


ALLOY STEEL / STAINLESS STEEL  
合金钢/不锈钢



## 尺寸 DIMENSIONS

Rate Capacity  
量程

	C	C1	L	L1	L2	L3	L4	W	W1	H	H1	H2	T
t/mm													
1;2;3	18	60	320	230	145	120	275	40	-	85	25	18	M12
5;7;10	13	60	320	230	145	120	275	50	25	100	30	18	M12
15;20;30	18	80	390	300	210	180	345	56	29	127	45	20	M16
40;50;60	22	90	500	395	235	200	445	86	45	173	67	21	M20
klb/inches(conversion of above dimensions 由以上尺寸转换)													
2.2;4.4;6.6	0.71	2.36	12.60	9.05	5.71	4.72	10.83	1.57	-	3.35	0.98	0.71	M12
11;15;22	0.51	2.36	12.60	9.05	5.71	4.72	10.83	1.97	0.98	3.94	1.18	0.71	M12
33;44;66	0.71	3.15	15.35	11.81	8.27	7.08	13.58	2.20	1.14	5.00	1.77	0.78	M16
88;110;132	0.87	3.54	19.68	15.55	9.25	7.87	17.5	3.38	1.77	6.8	2.6	0.826	M20

## 技术参数 SPECIFICATIONS

Full Scale Output 灵敏度输出	2.0 ± 0.1% mV/V	Recommended Excitation 使用电压	10V(15V Maximmm)
Zero Balance 零点输出	± 0.04mV/V	Insulation Resistance 绝缘阻抗	>2[50V DC]GΩ
Nonlinearity 非线性	< ± 0.03%	Nominal Temperature Range 工作温度	-10°C to 40°C / 14°F to 104°F
Repeatability 重复性	< ± 0.03%		
Hysteresis Error 滞后	< ± 0.03%	Safe Overload 安全过载	150% of full scale
Creep in 30 min 30分钟蠕变	< ± 0.05%	Breaking Overload 极限过载	300% of full scale
Input Resistance 输入电阻	775Ω ± 5	IP Rating 防护等级	IP67/IP68
Output Resistance 输出电阻	702Ω ± 2	Cable Color Code 颜色码	Exc(输入)+:Red(红);Exc(输入) -Black(黑);Sig(输出)+Green(绿); Sig(输出)-:Whit白 Shield Bare(屏蔽)
Element Materia 材质	Alloy steel/Stainless steel 合金钢/不锈钢		

## 612M

Special Features  
特征

- ◆ 符合OIML认证指标
- ◆ 易于安装, 性能稳定
- ◆ 防爆级(Ex ib II CT4)
- ◆ 合金钢
- ◆ Comply with OIML C3
- ◆ Easy installation reliable performance
- ◆ Explosion proof version (Ex ib II CT4)
- ◆ Alloy steel